



Marine Diesel Heating 2024

-
1. AirTop 2000 STC Air Heater
 2. AirTop 2000 STC heater kit SoD
 3. AirTop EVO 40/55 Air Heater
 4. AirTop EVO 40/55 heater kit SoD
 5. Thermo Top Evo
 6. Thermo Pro 90 Heater
 7. Thermo Top Pro 120/150 Heater
 8. Isotemp Water Heaters

Air Top air heaters

AT2000STC Marine diesel heater



Webasto diesel air heating systems are the ultimate choice when it comes to heating your boats cabins efficiently and economically. Providing continuous heating power output via stepless modulation, ensures constant cabin temperatures and reduced power consumption, which allows the heater to operate quietly whilst consuming very little fuel.

The light weight and compact air heaters are easy and quick to install with a robust composite casing that protects the unit against high temperatures in harsh conditions. Sealed control electronics and connectors withstand the marine environment.

Available with the option of 2 controllers - the Standard or Programmable Digital Multi Control, there is the perfect solution for your boating comfort.

Product features:

- Low noise dosing pump with PWM operation
- New external temperature sensor with new design
- Transparent fuel hose for easy inspection
- Easy to service and maintain, diagnostic capability
- Improved combustion air silencer reduces noise level
- Choice of 2 controllers - Standard or Programmable Digital Multi Control

Technical Specifications

Heating Power (kw)	0.9 - 2.0
Fuel Type	Diesel
Fuel consumption (L/h)	0.12 - 0.24
Rated voltage (V)	12
Rated power consumption (W)	14 - 29
Rated current at 12V (A)	1.2 - 2.4
Air flow against 0.5mbar (m³/h)	93
Dimensions (L x W x H mm)	311 x 120 x 121
Weight (kg)	2.6



Standard Control

Simple turn the hand control dial to start the heater and warm up to your desired set temperature.



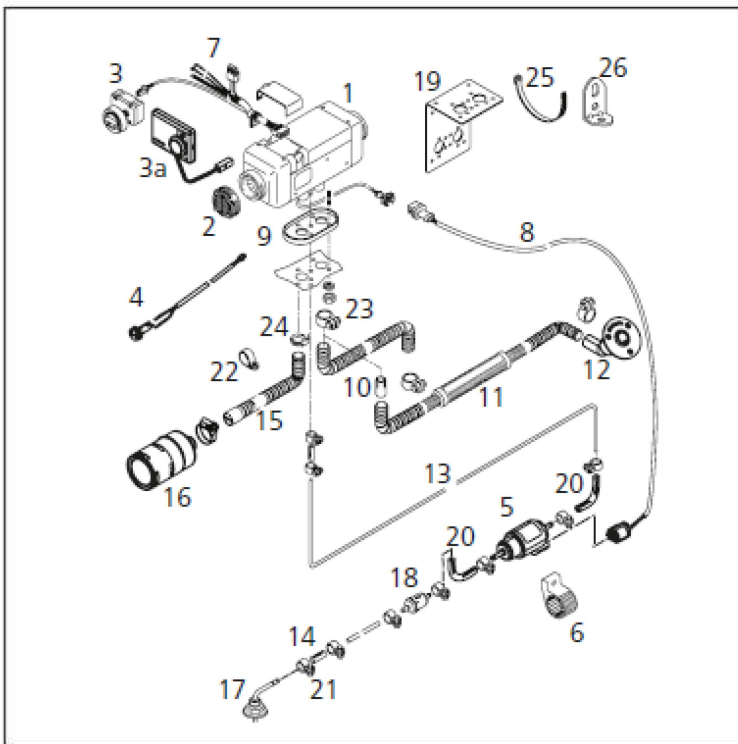
Programmable Digital Multi Control

Digital controller with easy to read screen, programming knob and Timer function.

Air Top air heaters







AT2000STC Marine heater kit

Scope of Delivery



Item	Qty	Description
1	1	heater 12 V
2	1	grille, clips open Ø 60
3	1	heater control element
3a	1	MultiControl
4	1	Temperature sensor, external 2.5 m
5	1	metering pump
6	1	support for metering pump EPDM
7	1	wiring harness with fuse holder 12 / 24 V
8	1	wiring harness (metering pump) 7,000 lg
9	1	gasket
10	1	exhaust gas reducing bush 22/24
11	1	exhaust silencer, leakproof Ø 24; 1,800 lg
12	1	exhaust through hull
13	1	transparent fuel hose: 5,000 lg
14	5	rubber fuel hose
15	1	Combustion air intake hose 300 lg
16	1	Combustion air intake silencer
17	1	tank extracting device
18	1	fuel filter
19	1	heater bracket stainless steel
20		Vibration damper for fuel hose
	1	bag (with mech. mounting hardware) consisting of:
21	10	hose clamp (stainless) Ø 14
22	1	pipe clip Ø 30
23	1	hose clamp Ø 26 – 28
24	1	hose clamp (stainless) Ø 16 – 27
25	17	cable tie
26	2	angle bracket

2 Accessories overview

	1 outlet	2 outlets	3 outlets
 Exhaust insulation	1	1	1
 60mm ducting	3 MTR	3 MTR	5 MTR
 Air outlet, 45°	1	1	1
 Air outlet, closable		1	2
 Hose connector for outlet	1	2	3
 Branch pipe 60x60x60mm		1	2

3 Controllers



Standard Control

Simple turn the hand control dial to start the heater and warm up to your desired set temperature.



Programmable Digital Multi Control

Digital controller with easy to read screen, programming knob and Timer function.

Air Top Evo 40/55

Evolution with more power and versatility



The Air Top Evo diesel heaters are available in 2 models - Evo 40 a 4kW unit or Evo 55 a 5.5kW unit - ensuring quick and efficient heating of cabins.

Energy consumption and noise are significantly reduced by the control system and intelligent fuel pump operation.

Quick and easy installation makes the Air Top Evo an economical solution.

The Air Top Evo 40/55 combines flexibility, functionality and product quality through innovation, while maintaining the traditional Webasto air heater design.

Product Features:

- Heating capacity of 4 kW or 5.5 kW depending on unit.
- Low energy consumption
- Exceptionally quiet operation
- Continuous heating capacity due to low power consumption
- Stepless power modulation
- A wide range of safety and comfort features
- ECU with improved humidity sealing
- Vibration dampers for fuel line
- Improved air intake silencer
- Flame detection through exhaust gas temperature sensor

Technical Specifications

	Air Top Evo 40*	Air Top Evo 55**
Heating output, control range/boost† (kW)	1.5 - 3.5 / 4.0	1.5 - 5.0 / 5.5
Heating output, control range/boost† (BTU/hr)	5,100 - 12,000 / 13,600	5,100 - 17,000 / 18,800
Fuel Type	Diesel	Diesel
Fuel consumption, control range/boost† (l/h)	0.18 - 0.43 / 0.49	0.18 - 0.61 / 0.67
Rated voltage (V)	12 / 24	12 / 24
Rated power consumption, control range/boost† (W)	15 - 40 / 55	15 - 95 / 130
Heating air volume flow against 0.5mbar, control range/boost† (m³/h)	Max. 132 / 140	Max. 200 / 220
Dimensions L x W x H (mm)	423 x 148 x 162	423 x 148 x 162
Weight (kg)	5.9	5.9

* Boost power† level for a maximum duration of 6 hours ** Boost power† level for a maximum duration of 30 minutes

† Boost only applicable to Programmable Digital Control.



Rotary Control

Simply turn the hand control dial to start the heater and warm up to your desired temperature.



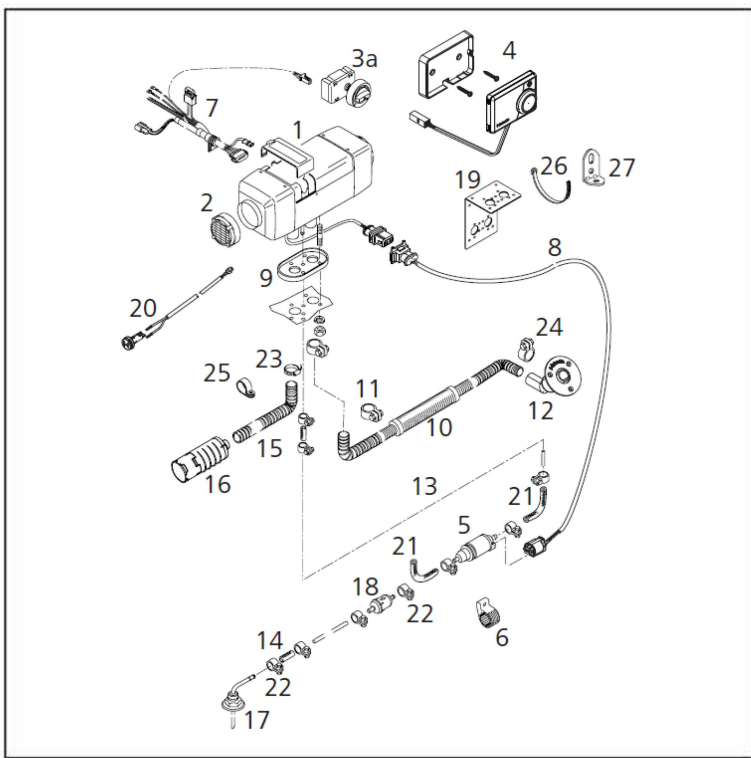
Programmable Digital Control

Digital controller with easy to read screen, programming knob and Timer function.

Air Top Evo 40/55 air heaters

AT Evo 40/55 Marine heater kit

Scope of Delivery



Item	Qty	Description
1	1	Heater 12 or 24 V
2	1	Grille
3a	1	Standard heater control element
4	1	MultiControl
5	1	Metering pump 12 or 24 V
6	1	Support for metering pump EPDM
7	1	Wiring harness (heater); 9,500 lg
8	1	Wiring harness (metering pump) 7,000 lg
9	1	Gasket
10	1	Exhaust silencer leakproof 1,800 lg
11	1	Hose clamp Ø 28 – 35
12	1	Exhaust through hull
13	1	Transparent fuel hose 12 V: 5,000 lg; 24 V: 8,000 lg
14	5	Rubber fuel hose
15	1	Combustion air intake hose 300 lg
16	1	Combustion air intake silencer
17	1	Tank extracting device
18	1	Fuel filter
19	1	Heater bracket stainless steel
20	1	Temperature sensor, external 2.5 m
21	2	Vibration damper for fuel hose
	1	Bag (with mech. mounting hardware) consisting of:
22	10	Hose clamp (stainless steel) Ø 14
23	1	Hose clamp Ø 16 – 27 (combustion air)
24	2	Hose clamp Ø 26 – 28 (exhaust)
25	1	Pipe clip (stainless steel) Ø 30
26	17	Cable tie
27	2	Angle bracket

OPTIONS

- Air Top Evo 40/55 Marine 12 V Diesel with standard heater control element
- Air Top Evo 40/55 Marine 24 V Diesel with standard heater control element
- Air Top Evo 40/55 Marine 12 V Diesel with MultiControl
- Air Top Evo 40 /55 Marine 24 V Diesel with MultiControl

The Marine heater kits include high quality stainless steel parts and accessories, long wiring harness, external temperature sensor and effective combustion and exhaust air silencers.

AIR DISTRIBUTION

For the distribution of the hot air in your boat you need hoses, distributors and outlets. Please compose your air distribution system individually.

FUEL SUPPLY

For the installation of the heater in the engine compartment the fuel supply system has to be fire-resistant according to EN ISO 7840. Please order the adequate components additionally (fuel lines, fuel supply kit, rubber hose, fuel pump protection).

EXHAUST SYSTEM (OPTIONAL)

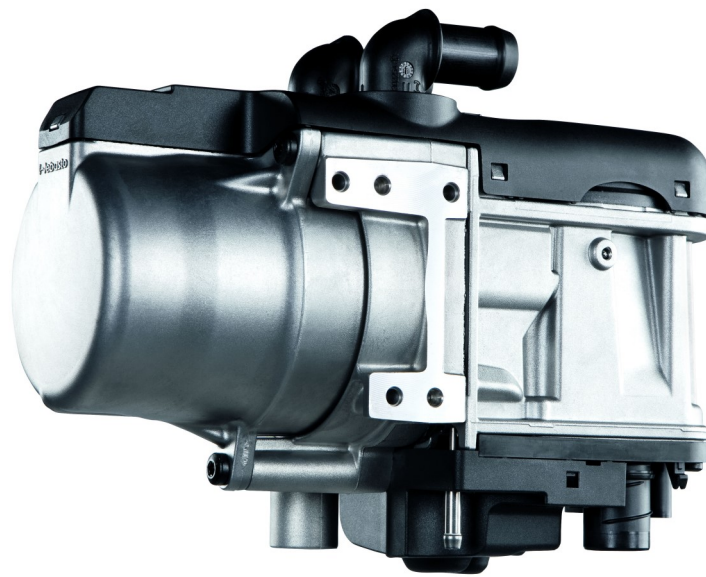
Depending on the installation position and length of the exhaust pipe you may need a condensation water drain and an exhaust pipe insulation additionally.

ACCESSORIES (OPTIONAL)

For extension of your heater system you find comfort control elements as well as other installation and system components in the accessories section.

Thermo Top Evo water heaters

Water heaters for the marine market



Webasto water heaters not only ensure even heat distribution in the boat, but also provide domestic hot water in conjunction with a water boiler. These heaters can be installed in the engine room with minimal space requirements, and can be easily combined with Webasto chiller air-conditioners to form an integrated climate control system.

A Wide range of water heater systems:

The Thermo Top Evo 5 kW unit is ideal for the majority of marine applications with its compact design, variable temperature control, reliable technology and low noise levels.

The Thermo Pro 90 offers high heat output, compact dimensions, service friendly technology, and an extremely low noise level.

The Thermo Top Pro 120/150 is the most robust device on the market and has proven itself through many years of use. The water heating system is also suitable for demanding applications with high heat output of 12kW & 15 kW. In cases where one single heater is not sufficient, two heaters can be combined.

Product Features:

- Even distribution of warmth
- Hot water the shower and galley
- Quiet running
- Space-saving installation in the engine room
- Excellent possibilities for combining with Webasto BlueCool air-conditioning systems
- Separate temperature control in every cabin
- Low fuel consumption
- Compact design
- Robust aluminium casing, resistant to high temperature or salt

Technical Specifications

	Thermo Top Evo	Thermo Pro 90	Thermo Pro 120	Thermo Pro 150
Voltage (V)	12	12/24	12/24	12/24
Heating output (kW) Partial Load - Full Load	2.5/5	1.8 -7.6 (boost mode 9.1)	12	15
Fuel; Fuel Consumption (L/Hr) Partial Load - Full Load	Diesel; 0.31- 0.62 l/h	Diesel; 0.18-1.08 (boost mode 1.33)	Diesel; 1.6	Diesel; 1.7
Power Consumption (W) Partial Load - Full Load	12/33	20 - 83 (boost mode 90)	80	100
Dimensions L x W x H (mm)	128 x 91 x 147	352 x 131 x 232	470 x 200 x 200	470 x 200 x 200
Weight (kg)	2.1	5.3	11.7	11.7

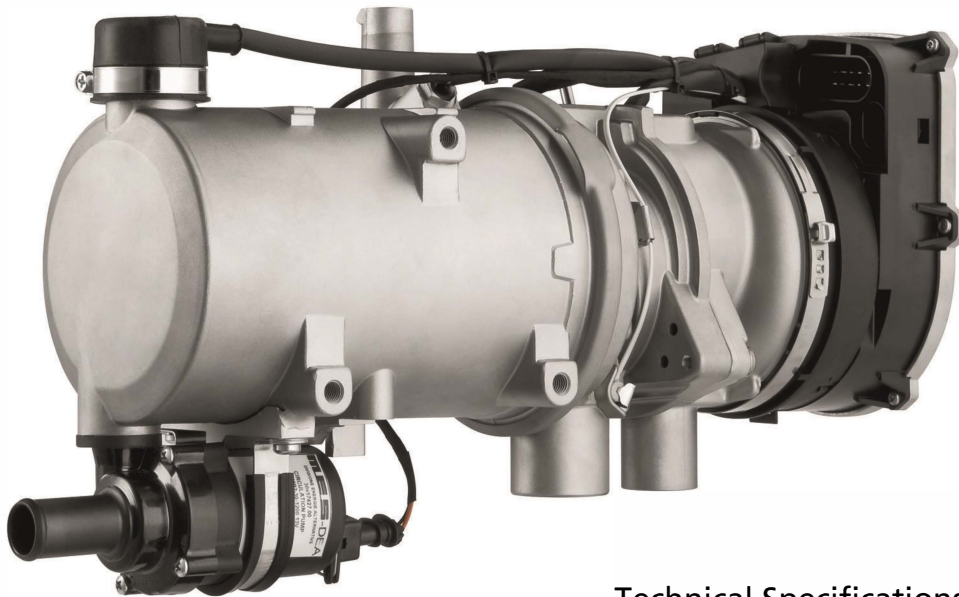
* Values for full load



Programmable Digital Control

Digital controller with easy to read screen, programming knob and Timer function.

Thermo Pro 90 water heater



The Webasto Thermo Pro 90 water heater is the ideal solution for both your domestic hot water and space heating needs.

These heaters can be installed in the engine room with minimal space requirements, and when combined with our plate heat exchanger will provide infinite hot water at a flick of a switch. Add fan heaters to the system to easily warm the vessel's cabins.

Boasting a compact design, high heat output, reliable proven technology, low noise and extremely low emissions, the Webasto Thermo Pro 90 is everything you need to keep you comfortable on the water.

Technical Specifications

	Thermo Pro 90
Voltage (V)	12/24
Heat Output (kW) Partial Load - Full Load	1.8 - 7.6 (boost mode 9.1)
Fuel; Fuel Consumption (L/Hr) Partial Load - Full Load	Diesel; 0.18 -1.08 (boost mode 1.33)
Power Consumption (W) Partial Load - Full Load	20 - 83 (boost mode 90)
Dimensions (LxWxH mm) Weight (kg)	352 x 131 x 232 4.8
Buffer Tank (capacity L)	5.3
Plate Heat Exchanger (LxWxH* mm) * including fittings	209 x 78 x 47
Fan Heater (kW) - size range	1.5 - 8.8

On demand Hot Water System (Optional)

Buffer Tank



Fan Heater

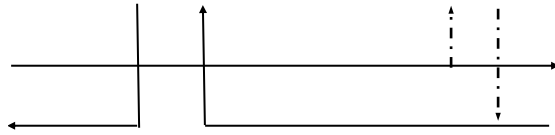
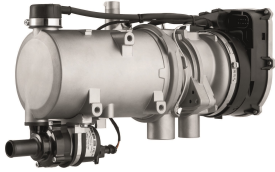
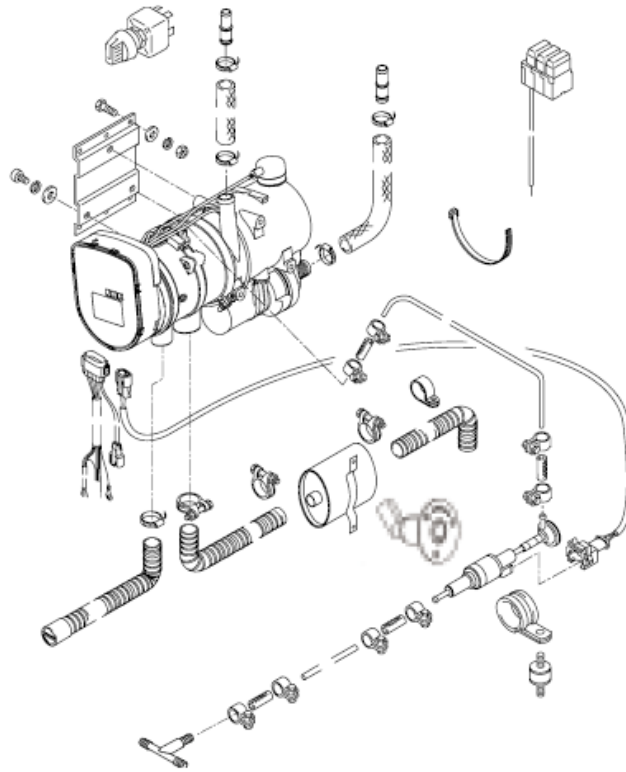


Plate Heat Exchanger

Thermo Pro 90 Heater

Scope of Delivery



Thermo Top Pro 120/150 water heater



The Webasto Thermo Top Pro 120/150 water heater is the ideal solution for both your domestic hot water and space heating needs.

These heaters can be installed in the engine room with minimal space requirements, and when combined with our plate heat exchanger will provide infinite hot water at a flick of a switch. Add fan heaters to the system to easily warm the vessel's cabins.

Boasting a compact design, high heat output, reliable proven technology, low noise and extremely low emissions, the Webasto Thermo Top Pro 120/150 is everything you need to keep you comfortable on the water.

Technical Specifications

	Thermo Top Pro 120	Thermo Top Pro 150
Voltage (V)	12/24	12/24
Heat Output (kW)	12.0	15.0
Fuel; Fuel Consumption (L/Hr)	Diesel; 1.6	Diesel; 1.7
Power Consumption (W)	80 6.7 amps at 12 V 3.3 amps at 24 V	100 8.3 amps at 12 V 4.2 amps at 24 V
Dimensions (LxWxH mm) Weight (kg)	470 x 200 x 200 11.7	470 x 200 x 200 11.7
Buffer Tank (capacity L)	5.3	5.3
Plate Heat Exchanger (LxWxH* mm) * including fittings	209 x 78 x 47	209 x 78 x 47
Fan Heater (kW) - size range	1.5 - 1.8	1.5 - 1.8

On demand Hot Water System (Optional)

Buffer Tank



Fan Heater



Thermo Top Pro 120/150 Heater

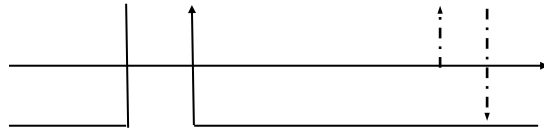
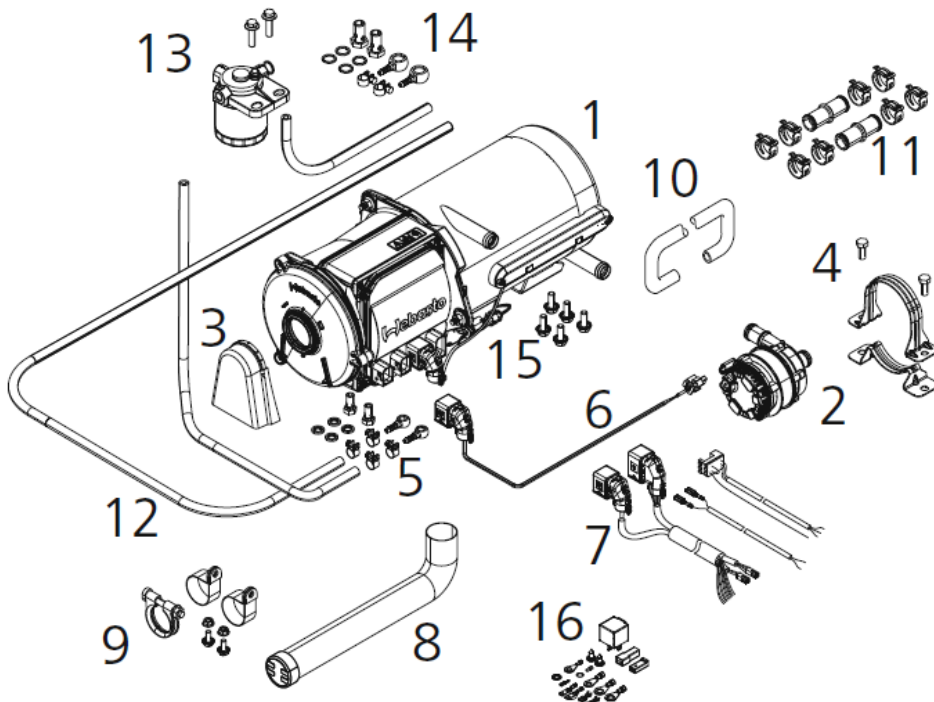


Plate Heat Exchanger

Scope of Delivery



Isotemp

Marine Water Heaters



Isotemp water heaters are specifically designed for use on yachts and boats. Only high quality components are chosen to ensure the best product performance.

The Isotemp water heater comes with a brushed stainless steel cover as well as innovative internal design. It achieves highest capacity by optimised installation of the engine water heat exchanger as well as the immersion heater. They are positioned in the lowest part of the tank where the water is coldest in order to ensure an equal heating of all the water in the tank. The water inlets and outlets are especially designed to minimise the mixture of cold and hot water.

Product Specifications:

Extra long, corrugated coils for high heat exchange efficiency

Special 7.0 bar/100 psi safety valve: simple winter drain

Ultra-thick insulation for lowest temperature loss

Electrical immersion heating element, especially designed to heat the water at the bottom of the tank

Thermostat mixing valve available as standard

Immersion heating element available in 750, 1200 & 2000W

2000W heating element is only compatible on 230V versions

Pressure & Temperature safety valve as standard

Australian Standards Approved

Product features:

- Robust design
- Water tank in stainless steel
- External cylinder in stainless steel
- Stable fixing feet in stainless steel
- 360° adjustable mounting for easy installation also on bulkhead

Technical Specifications

Slim and Basic	Volume (L)	Dimensions * L x ØD mm	Weight (kg)	Max. pressure (bar)	Immersion heater** (V/W)
Slim 15	15	520 x 295	10.5	7.0	230/750
Slim 20	20	645 x 295	11.5	7.0	230/750
Slim 25	25	765 x 295	13.5	7.0	230/750
Basic 24	24	470 x 395	14.0	7.0	230/750
Basic 30	30	535 x 395	17.0	7.0	230/750
Basic 40	40	640 x 395	20.0	7.0	230/750
Basic 50	50	760 x 395	23.0	7.0	230/1200
Basic 75	75	1050 x 395	29.0	7.0	230/1200
Square		Dimensions * L x ØD x W mm			
Square 16	16	400 x 180 x 560	16.0	5.5	230/750
Double coil		Dimensions *			
Basic 24	24	470 x 395	14.0	7.0	230/750
Basic 40	40	640 x 395	20.0	7.0	230/750
Basic 75	75	1050 x 395	29.0	7.0	230/1200

* Including thermostat mixing valve

** Immersion heater 115V/750W and 115V/1200W also available. Material: Tank, engine water coil and all connections AISI 316; Outside cover and mounting feet AISI 304; Electric immersion heater: Copper covered by Nickel; Insulation: Polyurethane; Water connections: ½" inside and outside NPT and BSP pipe thread. Changes of the specification may be done without prior notice.

NOTES:

Webasto Thermo & Comfort Australia Pty Ltd
423-427 The Boulevard
Kirrawee NSW 2232
Australia

+61 (0)2 8536 4800
svc-info@webasto.com

webasto.com